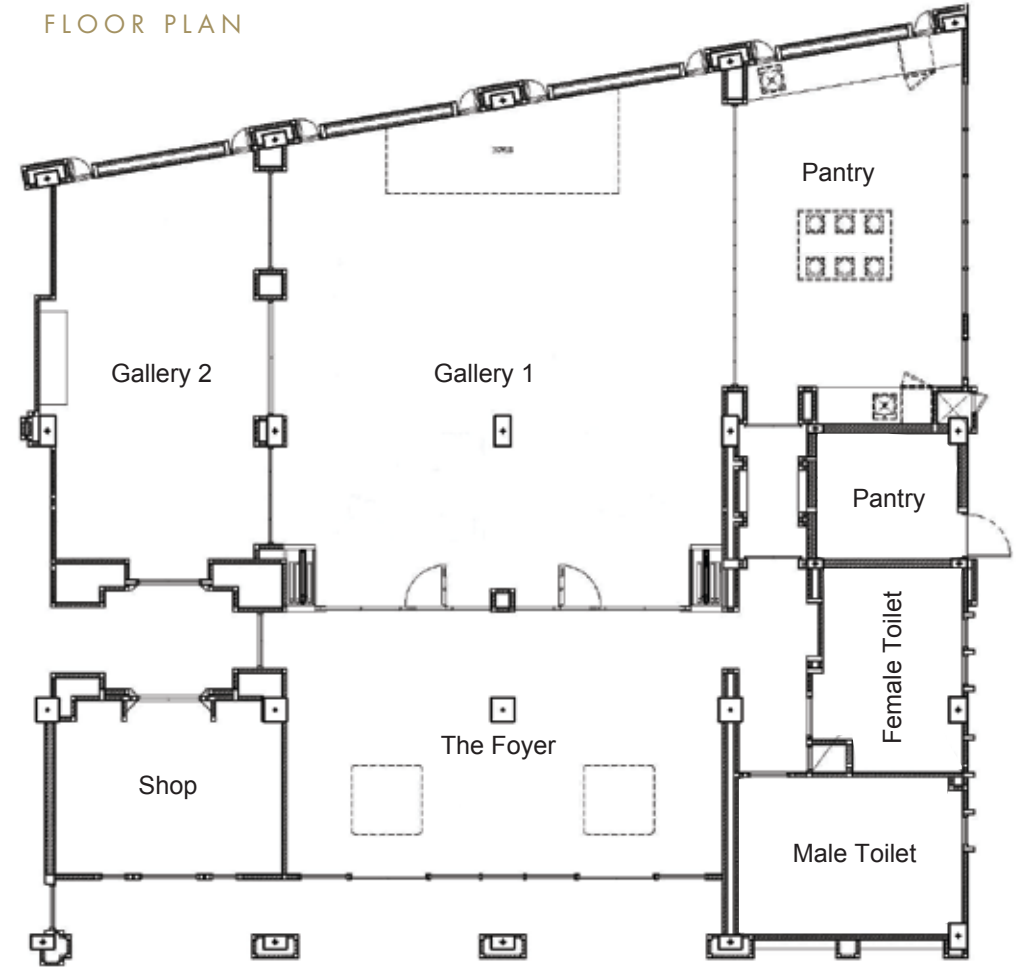


THE GALLERY



FLOOR PLAN



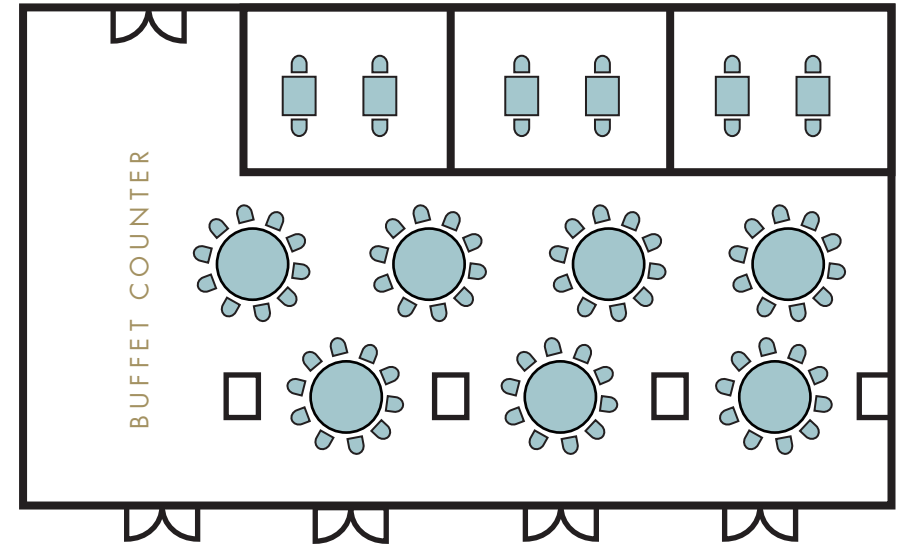
CAPACITIES



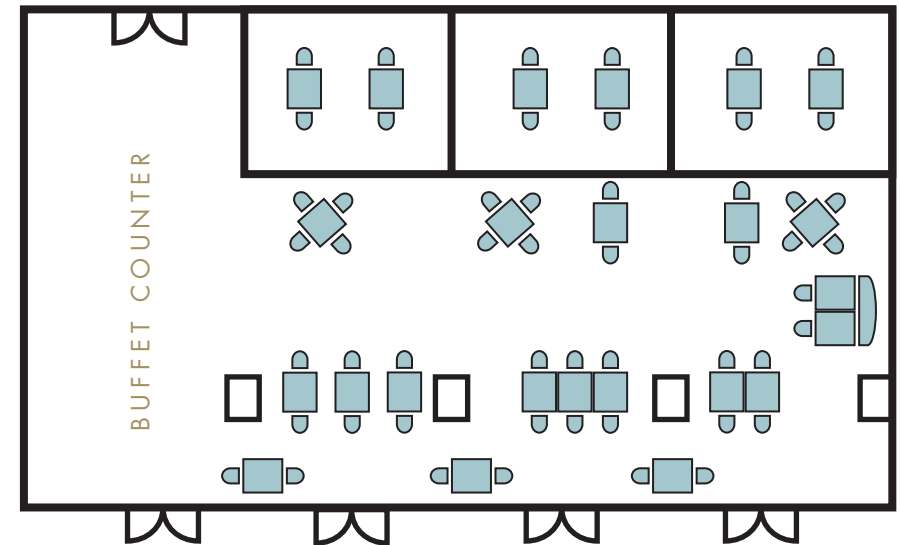
Name	Sq. M.	Banquet	Reception	Theatre	Classroom	Boardroom	U-Shape	Hollow Square	Exhibit
GROUND LEVEL									
GALLERY 1	98	60	80	70	45	35	30	24	—
BOARDROOM	36	—	—	—	—	20	—	—	—

THE DINING ROOM

The main restaurant can be converted to a private event space and catered to our preferences



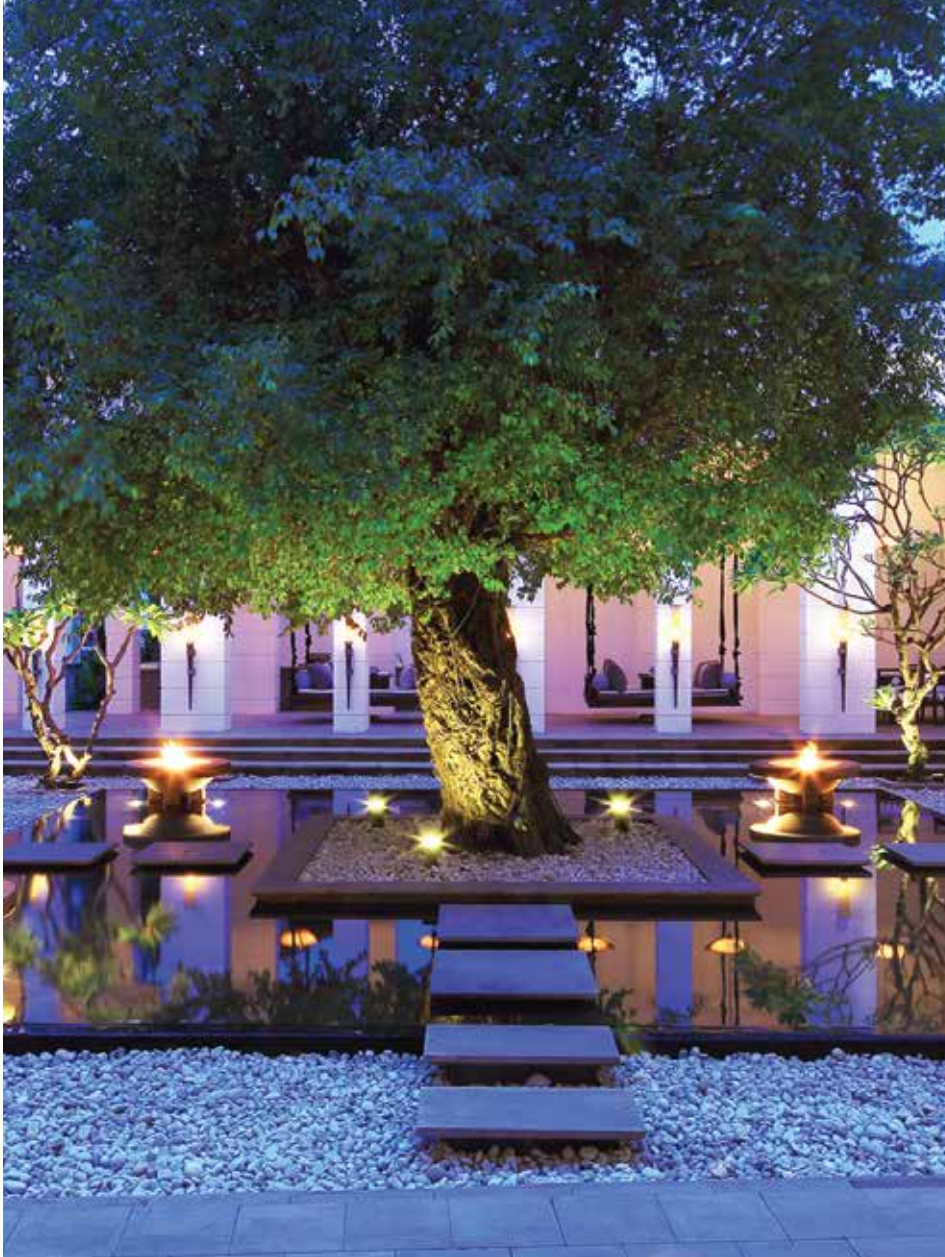
ROUND TABLE : 70 PEOPLE



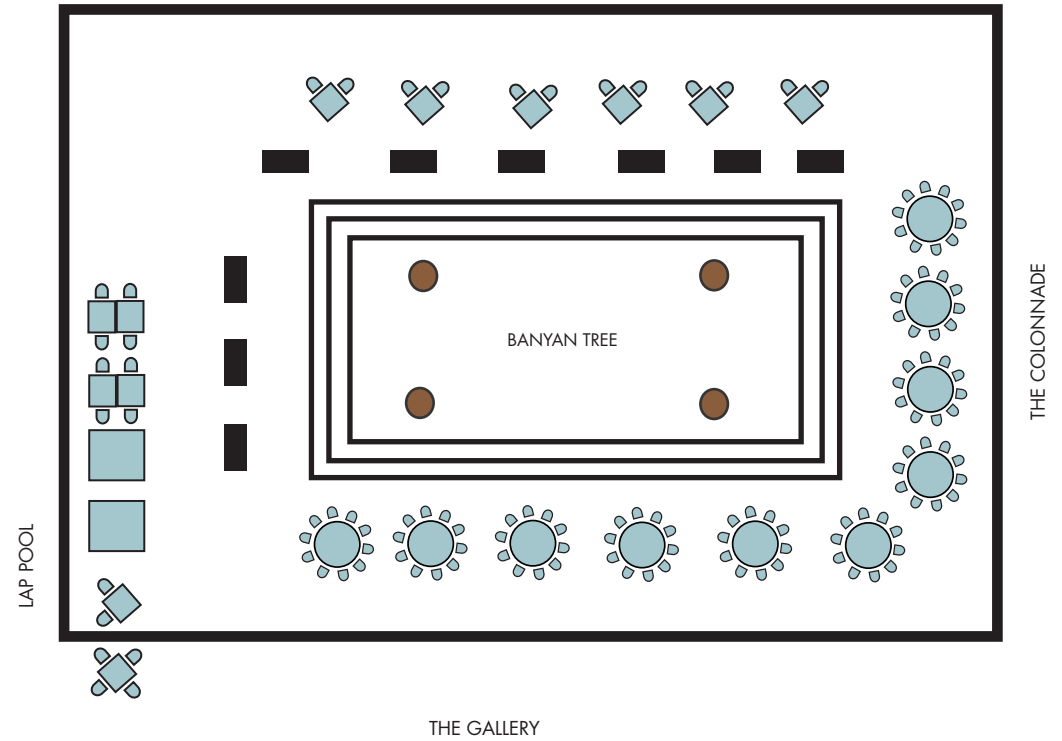
SQUARE TABLE : 88 PEOPLE

THE COURTYARD

This is the perfect venue for an unforgettable event in Siem Reap.



THE DINING ROOM



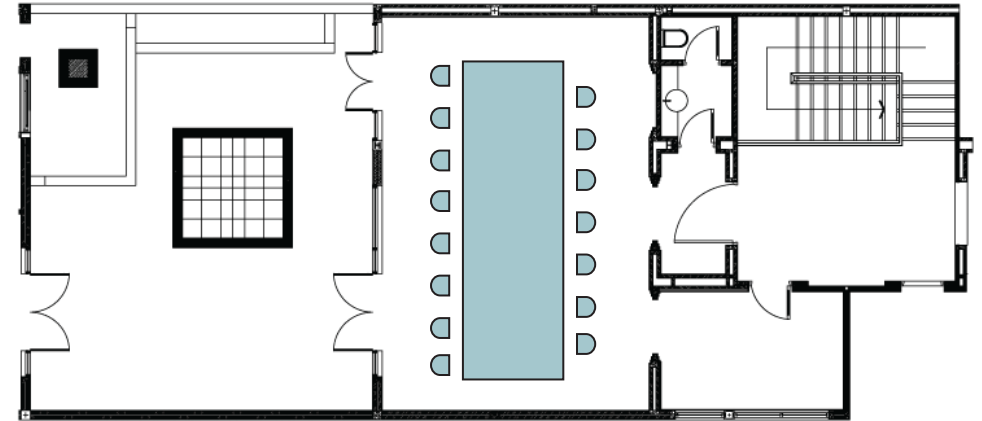
CAPACITY : 126 PEOPLE

SUITE ROOM 340

This room features a spacious living area with garden which can be converted to a private cocktail reception or dining venue for a small group size.



FLOOR PLAN



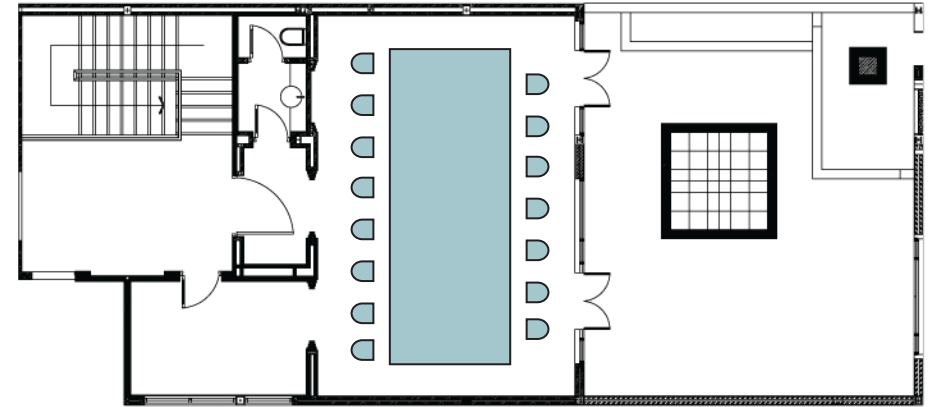
CAPACITY : 15 PAX

SUITE ROOM 342

This room features a spacious living area with garden which can be converted to a private cocktail reception or dining venue for a small group size.



FLOOR PLAN



CAPACITY : 15 PAX
